

SBS-135

Beam System



SBS-135 beamsystem

A perfect match with the Duralok system

Virtually any type of shuttering can be constructed — quickly, cost effectively and with optimum safety — with the new modular and flexible SBS-135 Shuttering System, now available from industry leaders, Scafom-rux.

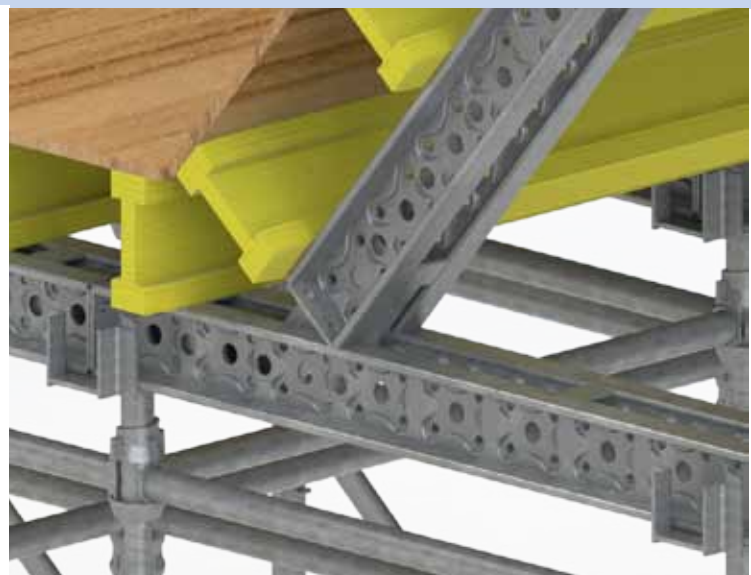
At the heart of SBS-135 is the trouble-free DURALOK shoring system. The easy workability of this unique connector contributes high levels of installation efficiency, thanks to the design of SBS-135 which easily handles the maximum 60kN loads that DURALOK standards usually support. Modern scaffolding networks can thus be constructed from integrated lightweight components over relatively large working areas.

In fact, SBS-135 has numerous advantages, over and above its simple and clear-cut assembly procedures.



SBS-135 advantages:

- Modular and flexible
- Optimal combination with widely accepted DURALOK shoring system
- Easy and fast assembly
- Lightweight components throughout
- Can be erected as a prefab construction and placed in position by a crane, resulting in short changeover and less down time
- Solidly made system with fewer components susceptible to normal wear and tear
- Durable thanks to hot-dip galvanised and robust components



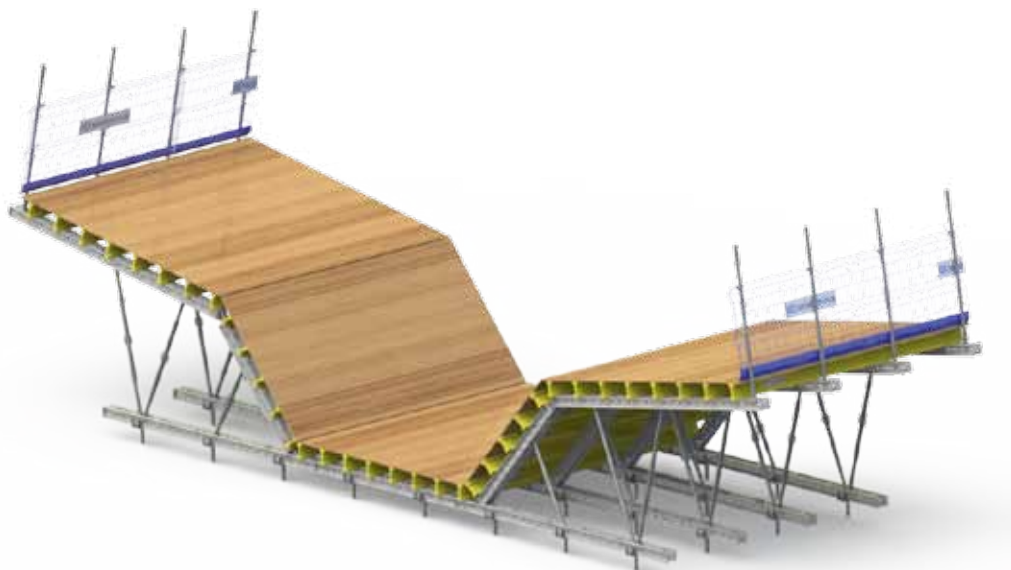
Easy assembly & short changeover times

Timelines mean money, particularly on time sensitive construction sites. Whatever the form of shuttering site project managers and construction operators have to deal with, it can be put up quickly and easily with the SBS-135 system.

Its primary supports — optimised double steel U-profiles — have fitting holes along their entire length. In this way, utilising various lightweight components from Scafom-rux International, any form of shuttering construction can be built in a single and very smooth operation.

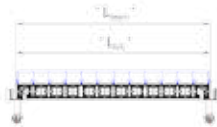
Lightweight steel I-beams function as secondary supports. When positioned correctly, robust form decking is then secured on top. Typical of the easy versatility of SBS-135, scaffolding with H20 timber supports can also be installed.

Another clear advantage of SBS-135, separate segments of the shuttering system can be assembled on the ground. These so-called “prefab constructions” elements can then be placed in position by crane. The end result is an exceptionally safe work method that creates shorter and thus more cost effective changeover times.



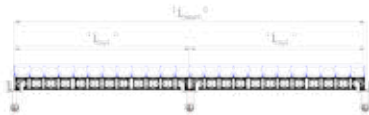


SBS-135 -
Beam on two supports.
Safe working load (Y=1,5)



	L_{beam}	$L_{sys} = L_{beam}$ Beam on 2 supports	$q_{max} \times L_{sys}$	25 kN/m ³ , B=1,20m (c.t.c.)	25 kN/m ³ , B=1,80m (c.t.c.)
Span L_{sys} (m)	Beam length (m)	q_{max} (kN/m)	Leg load (kN)	Slab thickness (m)	Slab thickness (m)
0,60	0,60	100,0	60,0	3,26	2,15
0,90	0,90	66,7	60,0	2,15	1,41
1,20	1,20	50,0	60,0	1,60	1,04
1,80	1,80	33,3	60,0	1,04	0,67
2,40	2,40	18,9	45,3	0,57	0,38

SBS-135 -
Beam on three supports
Safe working load (Y=1,5)

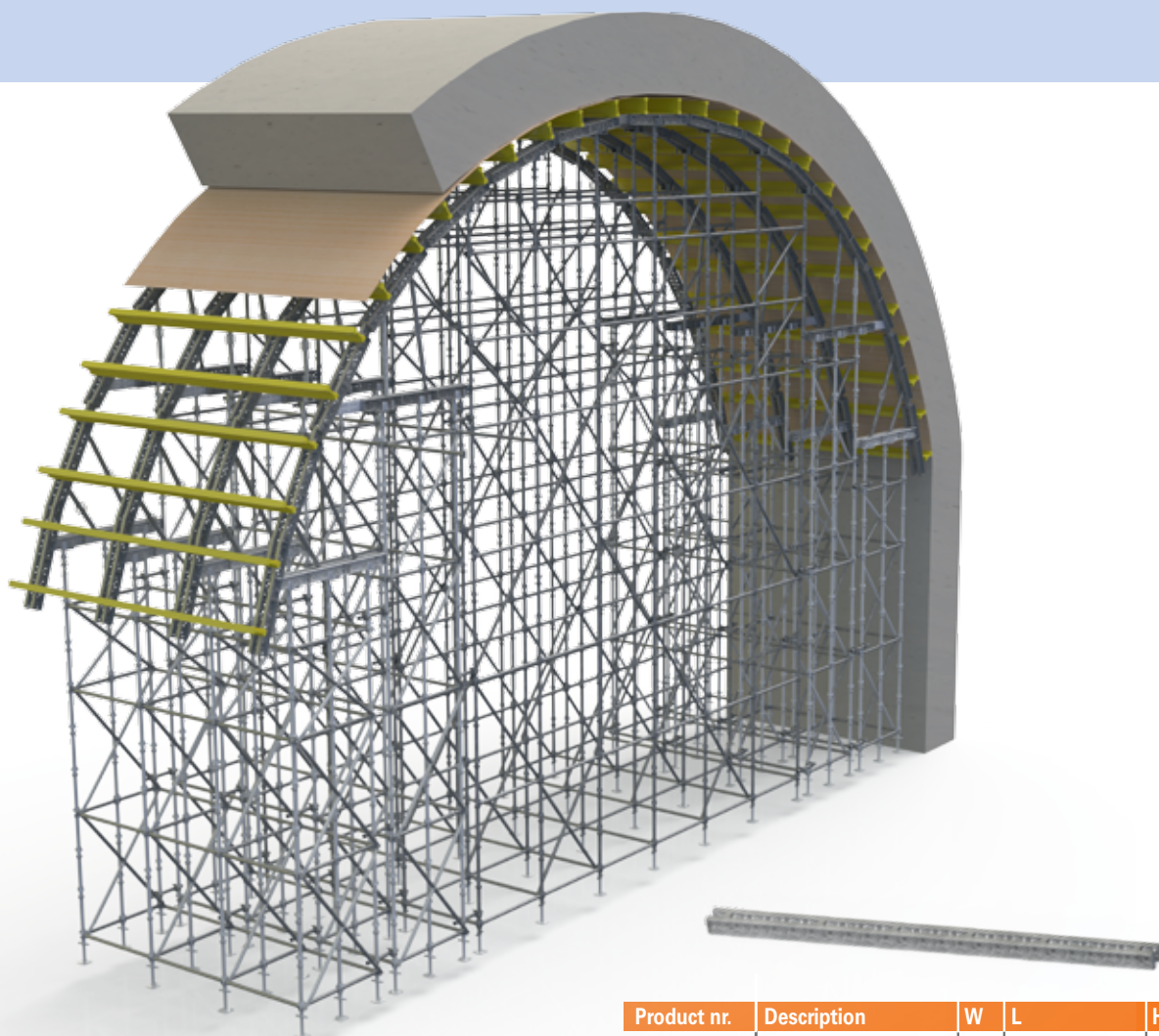


	L_{beam}	$L_{sys} = 0,5 \times L_{beam}$ Beam on 3 supports	$1,25 \times q_{max} \times L_{sys}$	25 kN/m ³ , B=1,20m (c.t.c.)	25 kN/m ³ , B=1,80m (c.t.c.)
Span L_{sys} (m)	Beam length (m)	q_{max} (kN/m)	Leg load (kN)	Slab thickness (m)	Slab thickness (m)
0,60	1,20	80,0	60,0	2,60	1,71
0,90	1,80	53,3	60,0	1,71	1,12
1,20	2,40	40,0	60,0	1,26	0,82
1,50	3,00	32,0	60,0	1,00	0,65
1,80	3,60	26,7	60,0	0,82	0,54

STATIC VALUES

Elastic modulus	E	210000	N/mm ²
Gross section area	A_{gross}	1908	mm ²
Nett section area	A_{nett}	1811	mm ²
Moment of inertia	I_y	5000000	mm ⁴
Bending moment (max)	$M_{d,y}$	20,5	kNm
Bending moment (swl)	$M_{rep,y}$	13,6	kNm
Shear (max)	V_d	90	kN
Shear (swl)	V_{rep}	60	kN

Wear-resistant & durable material



Product nr.	Description	W	L	H	Weight
E07BS001	SBS-135 Beam		600 mm		10,5 kg
E07BS002	SBS-135 Beam		900 mm		15,7 kg
E07BS003	SBS-135 Beam		1200 mm		20,4 kg
E07BS004	SBS-135 Beam		1800 mm		30,4 kg
E07BS005	SBS-135 Beam		2400 mm		40,4 kg
E07BS006	SBS-135 Beam		3000 mm		50,4 kg
E07BS007	SBS-135 Beam		3600 mm		60,4 kg

The power of simplicity

The simplicity of the Scafom-rux SBS-135 system means that only a few of the components are subjected to heavy wear. Their hot-dip and tough galvanised coating means that there is little or no risk of corrosion. Exceptionally strong build quality and long life durability are key features of the SBS-135 system.

The SBS-135 system offers an easy structural and business fit of light-weight, integrated components that create optimum safety and other efficiencies for professional and better on-site project management.



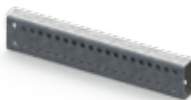
Product nr.	Description	W	L	H	Weight
E01RL0083	Turnbuckle 60 RL 112		max. 1120 mm		7,7 kg
E01RL0084	Turnbuckle 60 RL 190		max. 1900 mm		11,6 kg



Product nr.	Description	W	L	H	Weight
E05AA0013	H20 Beam		1450 mm		7,5 kg
E05AA0005	H20 Beam		1800 mm		9,4 kg
E05AA0014	H20 Beam		2000 mm		10,4 kg
E05AA0006	H20 Beam		2400 mm		12,4 kg
E05AA0007	H20 Beam		2900 mm		15,1 kg
E05AA0008	H20 Beam		3900 mm		20,3 kg
E05AA0011	H20 Beam		4900 mm		25,5 kg



Product nr.	Description	W	L	H	Weight
E07BS0009	Straight connector		290		3,0 kg



Product nr.	Description	W	L	H	Weight
E07BS0010	Straight connector		600		7,8 kg



Product nr.	Description	W	L	H	Weight
E07BS0011	Swivel connector				4,9 kg



Product nr.	Description	W	L	H	Weight
E07BS0012	Bracing socket				1,4 kg



Product nr.	Description	W	L	H	Weight
E07BS0013	Guardrail post socket				1,2 kg



Product nr.	Description	W	L	H	Weight
E07BS0017	Adjustable connector				3,3 kg



Product nr.	Description	W	L	H	Weight
E07BS0018	H20 Clamp				0,3 kg

