

# STAIRTOWERS

Complementary- and  
total solutions

Brochure Complementary- and total solutions **STAIRTOWERS**



## Stairway Solutions

Stairway steps need to carry heavy loads reliably AND give stairway users safe access to difficult, often dangerous construction sites. Stairway systems also have to adapt easily to the demands of different sites while meeting the strict requirements of user friendliness in high traffic environments. User and worksite safety is always a paramount consideration.

The Scafom-rux product portfolio contains a wide variety of safe, technical solutions for stairtower structures... from simple ladders to spacious stairways. And they all have safety, economy and tried, tested and proven innovation in common. Scaffolding is generally recognised as a safety product.

The user must be able to rely 100% on it. Scafom-rux ensures that all components are thoroughly tested during and after the production process. Other important factors like fall protection, slip resistance of stairs and the optimisation of weight:strength ratios are the continuous focus of the Scafom-rux R&D engineering team.

Scafom-rux stair solutions include ladder platforms, lightweight aluminium staircases for renovation and façade scaffolding, welded (loading capacity of  $2 \text{ kN/m}^2$ ) and demountable steel stairs (loading capacity of  $3 \text{ kN/m}^2$ ) and Emergency/Public Access steel stairs (loading capacity of  $7.5 \text{ kN/m}^2$ ).





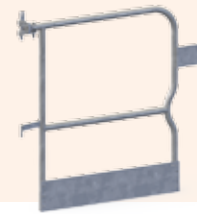
## Ladder

Fabricated from  $\varnothing 48.3\text{mm}$  tube for easy integration with standard couplers to the scaffold system. Ladders interconnected by means of spigots and bolts. Configuration can be extended/expanded with gates and guardrails for additional safety.



Product nr.	Description	W	L	H	Weight
E04RS0501	Safety gate post		1.70 m		8.7 kg

Product nr.	Description	W	L	H	Weight
E04RS0500	Ladder steel	0.383 m	1.00 m		8.5 kg
E04RS0454	Ladder steel	0.383 m	2.00 m		15.3 kg
E04RS0455	Ladder steel	0.383 m	3.00 m		22.1 kg
E04RS0456	Ladder steel	0.383 m	4.00 m		30.4 kg



Product nr.	Description	W	L	H	Weight
E04RS0533	Safety gate	1.000 m	1.00 m		10.2 kg

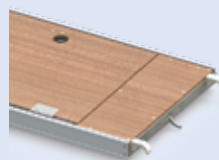
## Ladderplatform

Aluminium and plywood ladderplatforms in various systems, sizes and configurations. Easy, simple access to the scaffold. Ladder is secured with a latch under the platform. Convenient transportation. Ladderplatforms smaller than 2,57 m delivered with a separate ladder. The cover opens only to  $85^\circ$ . When open it has to be pushed and held. Loading capacity: Class 3 ( $2 \text{ kN/m}^2$ ).

Product nr.	Description	W	L	H	Weight
E04RS0896	Ladderplatform Alu/Ply (O)	0.61 m	2.07 m	2.00 m	26.6 kg
E04RS0465	Ladderplatform Alu/Ply (O)	0.61 m	2.57 m	2.00 m	27.1 kg
E04RS0466	Ladderplatform Alu/Ply (O)	0.61 m	3.07 m	2.00 m	30.4 kg

Product nr.	Description	W	L	H	Weight
E04RS0978	Ladderplatform Alu/Ply (U)	0.61 m	1.57 m	2.00 m	15.4 kg
E04RS0979	Ladderplatform Alu/Ply (U)	0.61 m	2.07 m	2.00 m	19.6 kg
E04RS0467	Ladderplatform Alu/Ply (U)	0.61 m	2.57 m	2.00 m	26.7 kg
E04RS0468	Ladderplatform Alu/Ply (U)	0.61 m	3.07 m	2.00 m	29.9 kg

Product nr.	Description	W	L	H	Weight
E04PF0044	Ladderplatform Alu/Ply (O)	0.64 m	2.50 m	2.00 m	27.1 kg
E04PF0045	Ladderplatform Alu/Ply (O)	0.64 m	3.00 m	2.00 m	30.5 kg





Product nr.	Description	W	L	H	Weight
E04RS0571	Platform Stair Alu (O)	0.625 m	2.57 m	2.00 m	31.0 kg
E04RS0679	Platform Stair Alu (O)	0.625 m	2.57 m	2.16 m	32.5 kg
E04PF0052	Platform Stair Alu (O)	0.625 m	2.50 m	2.00 m	27.7 kg
E04RS0589	Platform Stair Alu (U)	0.625 m	2.57 m	2.00 m	26.8 kg
E04RS0955	Platform Stair Alu (U)	0.625 m	3.07 m	2.00 m	35.9 kg
E04RS0587	Platform Stair Alu (O)	0.711 m	3.048 m	2.00 m	33.1 kg
E04RS1086	Platform Stair Steel (O)	0.625 m	2.07 m	1.50 m	39.8 kg



Product nr.	Description	W	L	H	Weight
E04RS0572	Outer Guardrail for E04RS0571		2.57 m	2.00 m	15.7 kg
E04RS0682	Outer Guardrail for E04RS0697		2.57 m	2.16 m	16.9 kg
E04RS0064	Outer Guardrail for E04RS0589		2.57 m	2.00 m	15.9 kg
E04RS0065	Outer Guardrail for E04RS0955		3.07 m	2.00 m	16.7 kg
E04RS0676	Outer Guardrail for E04PF0055		2.50 m	2.00 m	15.7 kg
E04RS0588	Outer Guardrail for E04RS0587		3.048 m	2.00 m	17.2 kg
E04RS1092	Outer Guardrail for E04RS1086		2.07 m	1.50 m	13.6 kg



Product nr.	Description	W	L	H	Weight
E04RS1009	Platform Stair Alu (O)	0.625 m	> 2.07 m	1.50 m	19.3 kg
E04RS0882	Platform Stair Alu (O)	0.625 m	> 1.57 m	1.08 m	14.4 kg
E04RS1005	Platform Stair Alu (O)	0.625 m	> 1.57 m	1.00 m	14.3 kg
E04RS1008	Platform Stair Alu (O)	0.625 m	> 1.09 m	0.50 m	9.9 kg



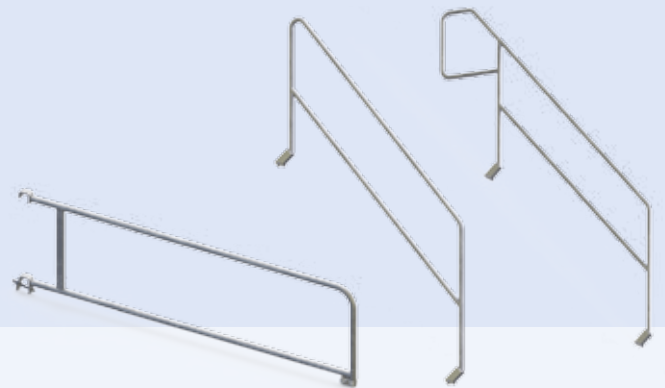
Product nr.	Description	W	L	H	Weight
E04RS0592	Guard rail Adaptor		0.70 m		0.8 kg



Product nr.	Description	W	L	H	Weight
E04RS0726	End Guardrail				6.1 kg



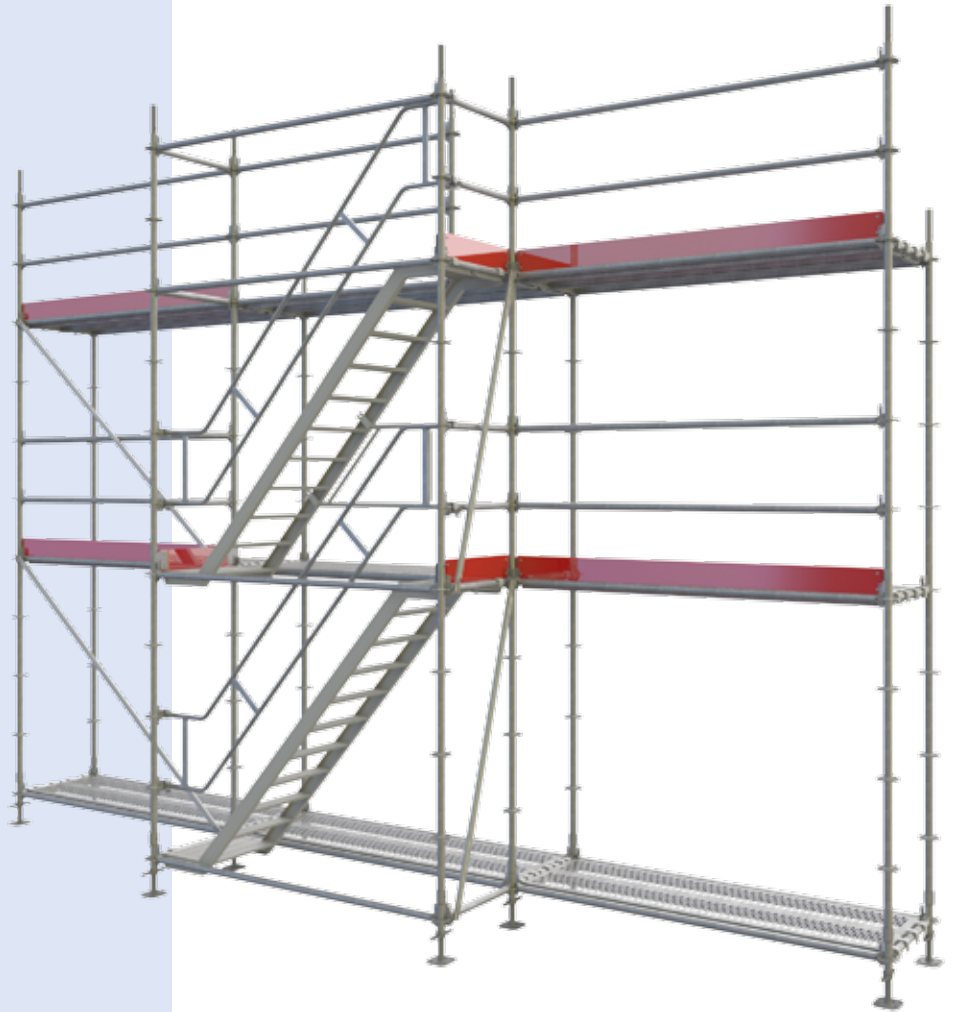
Product nr.	Description	W	L	H	Weight
E04RS1029	Guardrail Universal		2.50-3.07 m		5.7 kg
E04RS1030	Guardrail Topplatform		2.50-3.07 m		9.1 kg



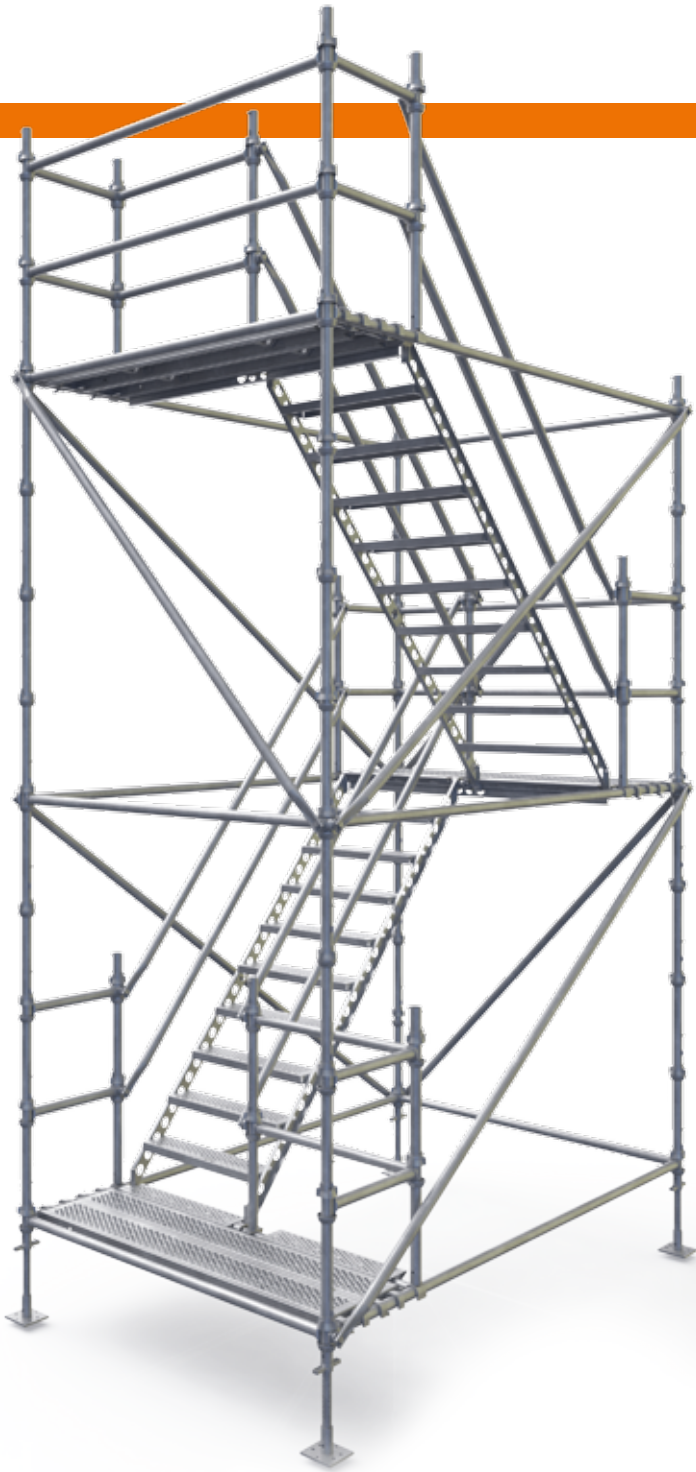
Product nr.	Description	W	L	H	Weight
E04RS0573	Outer Guardrail for E04RS0571		2.50-3.07 m	2.00 m	10.6 kg
E04RS0593	Outer Guardrail for E04RS0697		2.50-3.07 m	2.00 m	12.2 kg
E04RS0684	Outer Guardrail for E04RS0589		2.57-3.07 m	2.16 m	11.8 kg
E04RS0685	Outer Guardrail for E04RS0955		2.57-3.07 m	2.16 m	14.3 kg
E04RS1093	Inner Guardrail for E04RS1086		2.07m	1.50 m	8.2 kg

## Platform staircase

Aluminium staircase for various systems and in a range of sizes. With the additional accessories and components, safe stairtowers can be configured for any specific situation. When properly anchored, different configurations of this stairtower can be built for scaffold or building access, up to heights of 70 m. Loading capacity: class 3 (2 kN/m<sup>2</sup>).







## Welded steel stair with a loading capacity of 2 kN/m<sup>2</sup>

Duralok Stairtower in 4, 8 or 10 leg configuration is a lightweight steel stair solution. When properly anchored, allows building height up to 60 m. First and last step is a special ledger or transom with a tread that can be used. For handrail, standard facebraces are used. For the 1.5 m rise configuration, special handrails available.

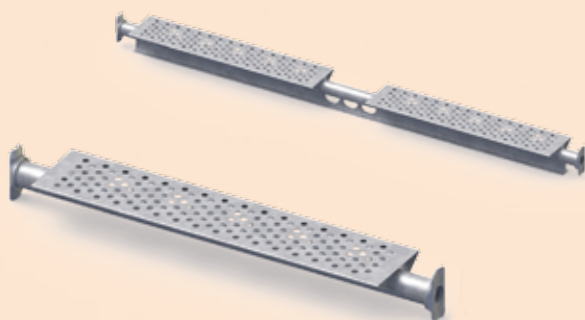




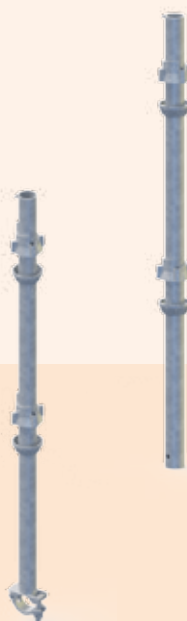
Product nr.	Description	W	L	H	Weight
E04DL0298	Steel Stair	0.900 m	1.80 m	2.00 m	32.7 kg
E04DL0305	Steel Stair	0.900 m	1.80 m	1.50 m	30.2 kg



Product nr.	Description	W	L	H	Weight
E04DL0299	Transom with Gapcover (4-legs configuration)		1.80 m		15.2 kg



Product nr.	Description	W	L	H	Weight
E04DL0303	Ledger with Gapcover (8-legs configuration)		1.80 m		14.2 kg
E04DL0302	Ledger with Gapcover (10-legs configuration)		0.90 m		5.1 kg



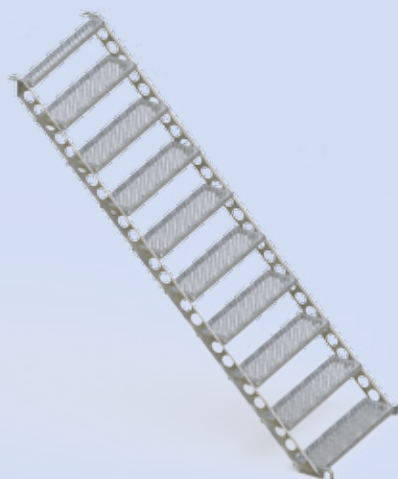
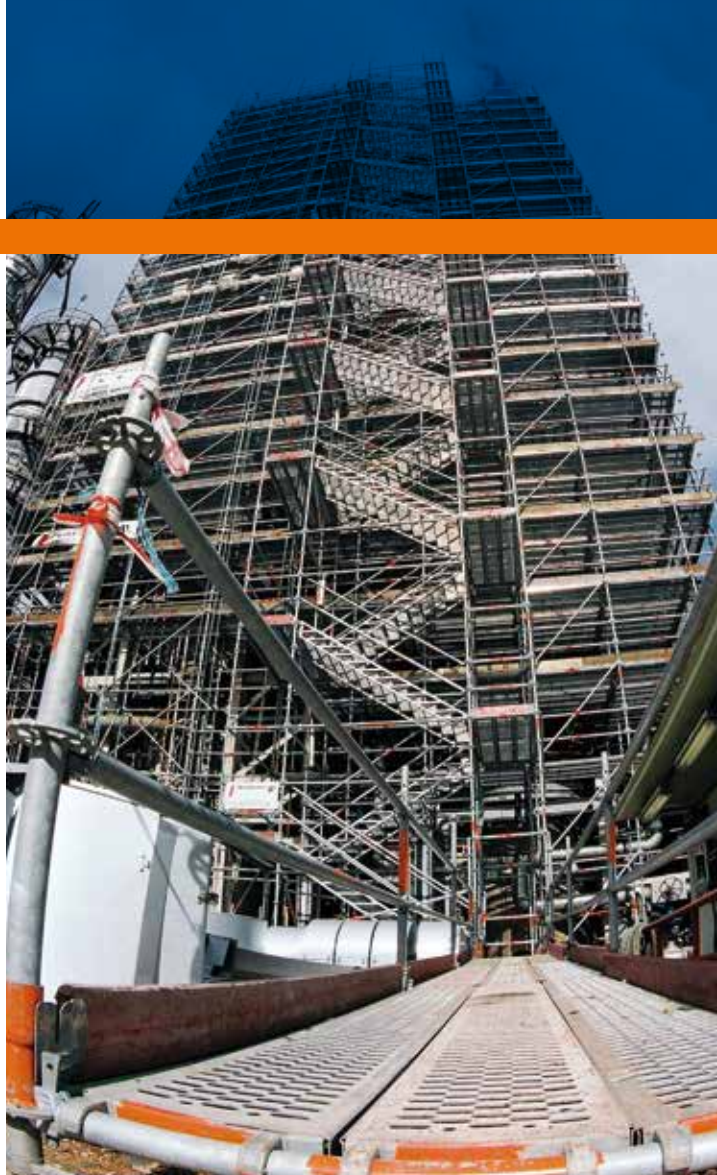
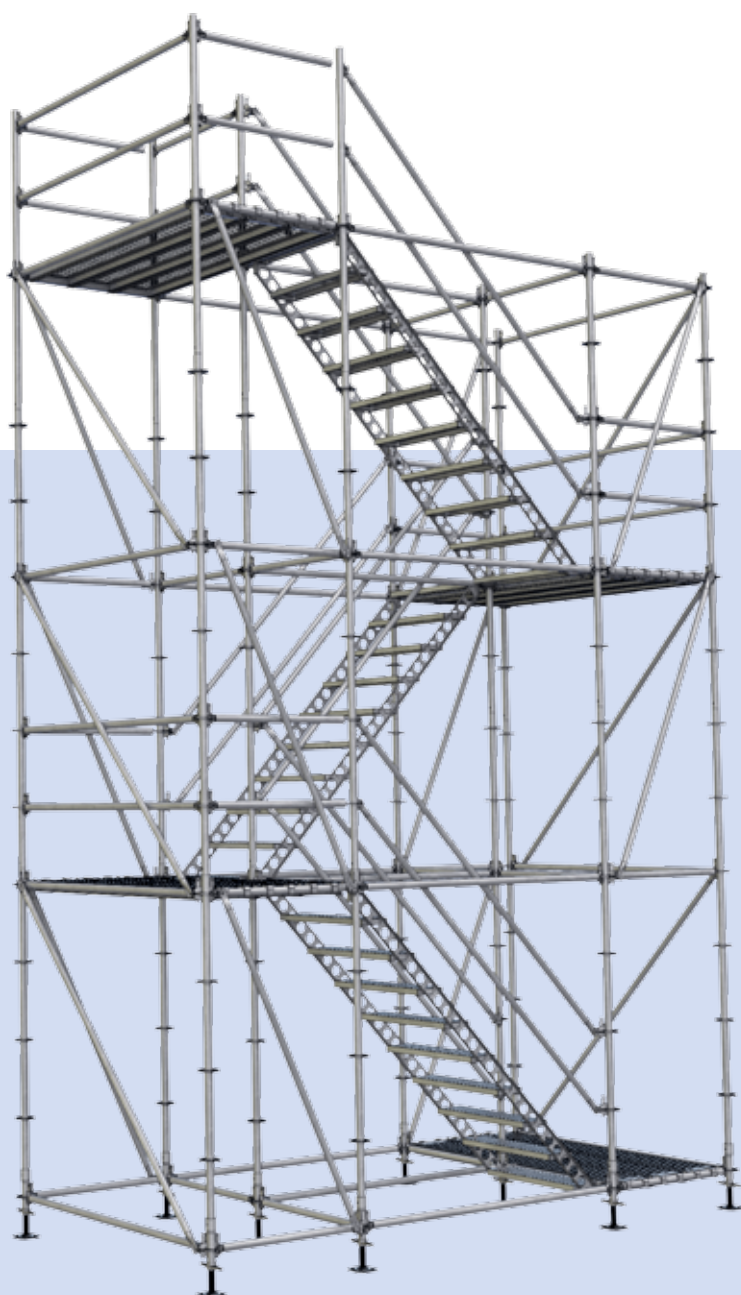
Product nr.	Description	W	L	H	Weight
E04DL0300	Guardrailpost (4-legs configuration)			1.80 m	6.1 kg
E04DL0301	Guardrailpost Boltcoupler (4/8-legs)			1.80 m	6.8 kg

Product nr.	Description	W	L	H	Weight
E04DL0304	Guardrail Left		1.80 m	1.50 m	14.7 kg
E04DL0305	Guardrail Right		1.80 m	1.50 m	14.7 kg



# Ringscaff Stairtower

Configured as 4 or 10 legs steel stair tower for building height up to 60 m. First and last tread are included in the stair, so no extra components are required. Handrail standard face braces can be used as well. The 4 leg configuration uses consoles with decks as circulation platform.

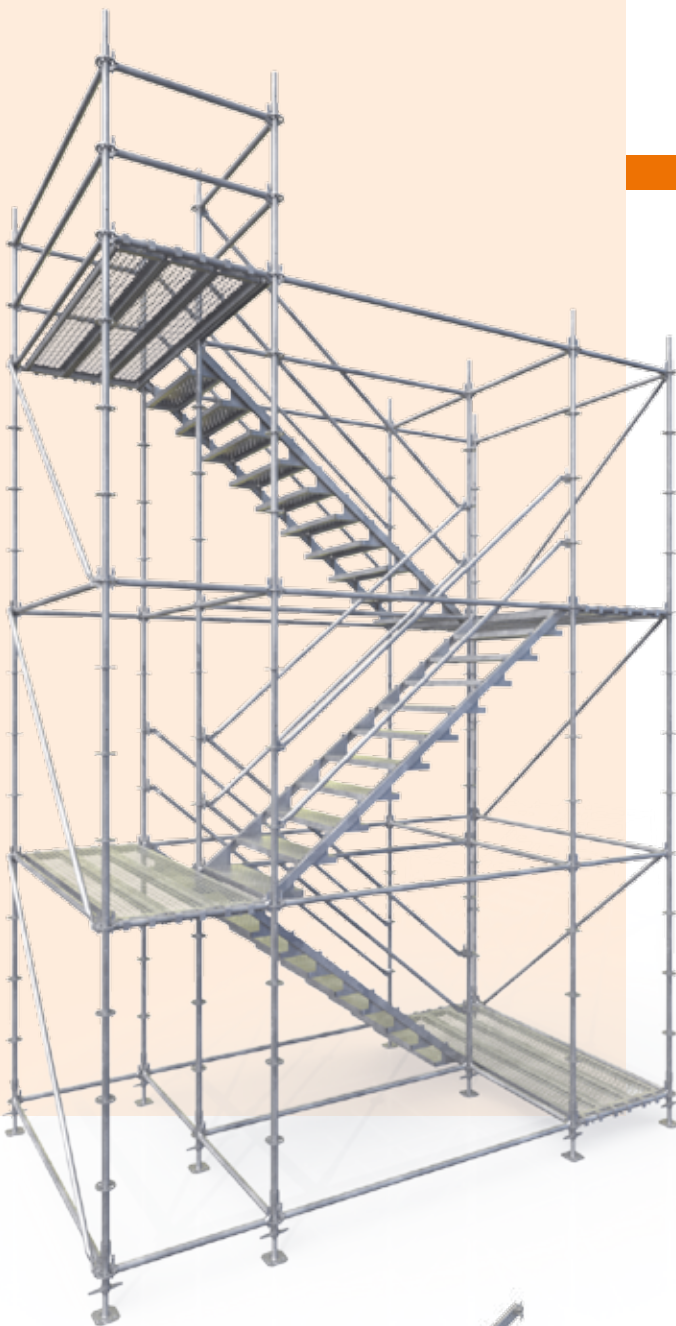


Product nr.	Description	W	L	H	Weight
E04RS0992	Steel stair	0.70 m	2.07 m	2.00 m	36.2 kg
E04RS0965	Steel stair	1.036 m	2.07 m	2.00 m	41.2 kg
E04RS0990	Steel stair	1.036 m	2.07 m	1.50 m	36.8 kg
E04RS0966	Steel stair	1.036 m	2.57 m	2.00 m	46.0 kg
E04RS1004	Steel stair	1.00 m	2.00 m	2.00 m	39.9 kg
E04RS1028	Steel stair	1.00 m	2.50 m	2.00 m	44.2 kg
E04RS1198	Guardrail Left		2.07 m	1.50 m	14.8 kg
E04RS1199	Guardrail Right		2.07 m	1.50 m	14.8 kg

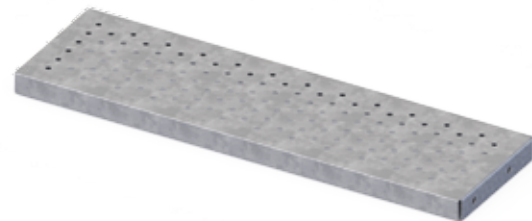


## Demountable steel staircase with a loading capacity of 3 kN/m<sup>2</sup>

Left and right tread brackets and the treads are bolted together. These are mounted on stringer-pins with the slotted holes. For handrail applications, standard face braces are used.



Product nr.	Description	W	L	H	Weight
E04RS0495	Tread Bracket Right		2.50/2.57 m	2.00 m	1.1 kg
E04RS0496	Tread Bracket Left		2.50/2.57 m	2.00 m	1.1 kg
E04RS0498	Tread Bracket Right		2.13 m	2.00 m	1.2 kg
E04RS0499	Tread Bracket Left		2.13 m	2.00 m	1.2 kg
E04DL0291	Tread Bracket Right		1.80 m	2.00 m	1.0 kg
E04DL0292	Tread Bracket Left		1.80 m	2.00 m	1.0 kg

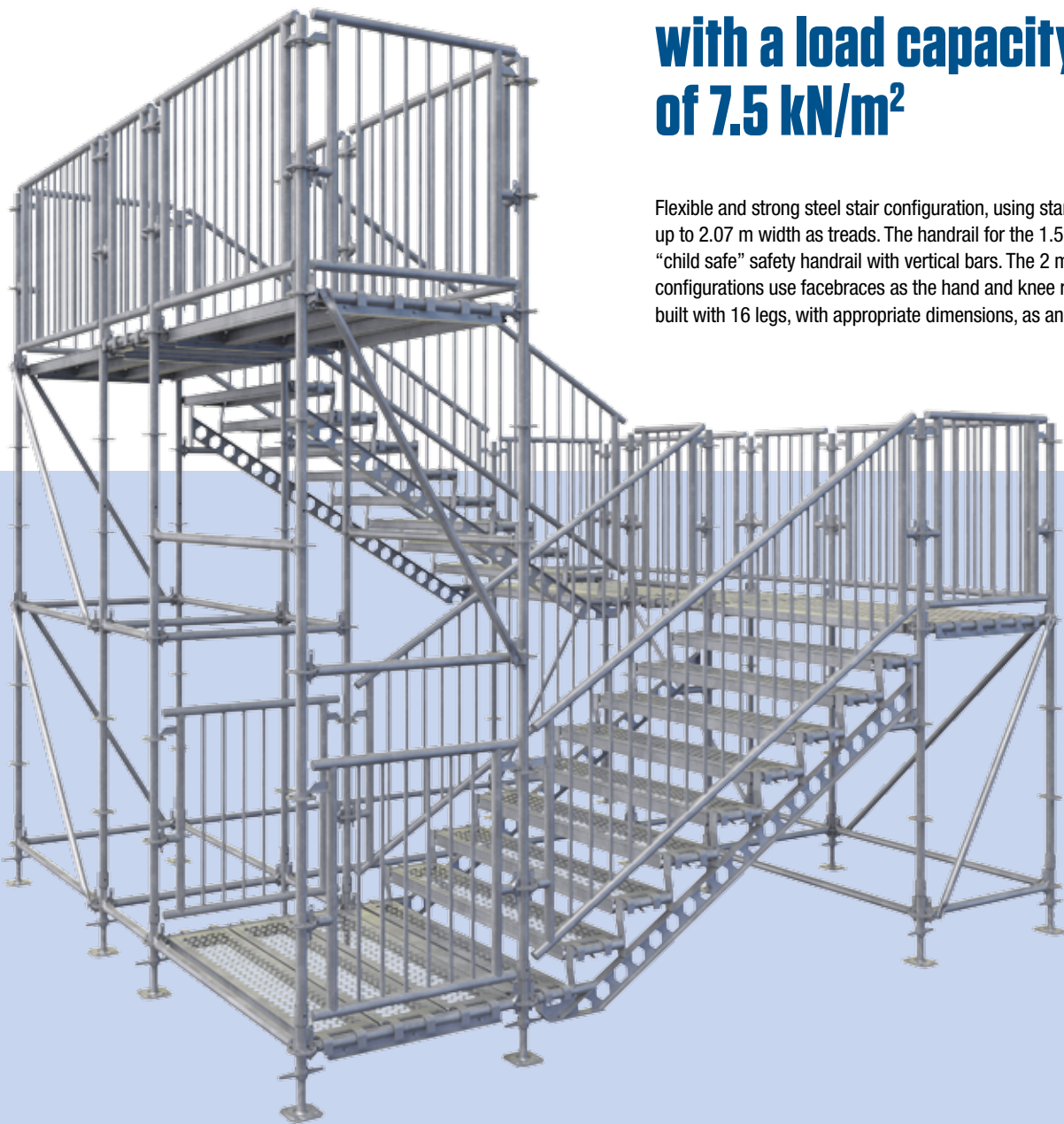


Product nr.	Description	W	L	H	Weight
E04RS0205	Stringer heavy duty	1.286 m	2.57 m	2.00 m	17.0 kg
E04RS0537	Stringer heavy duty	1.250 m	2.50 m	2.00 m	16.8 kg
E04RS0498	Stringer heavy duty	1.065 m	2.13 m	2.00 m	14.6 kg
E04RS0499	Stringer heavy duty	0.90 m	1.80 m	2.00 m	14.4 kg
E04DL0291	Stringer heavy duty	1.25 m	2.50 m	2.00 m	16.8 kg
E04DL0292	Stringer heavy duty	1.25 m	2.439 m	2.00 m	15.9 kg

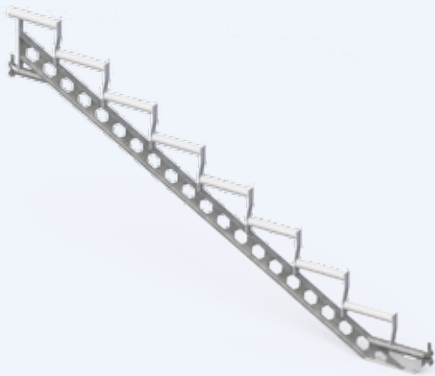
Product nr.	Description	W	L	H	Weight
E04RS0494	Stair Tread	1.286 m			8.1 kg
E04RS0540	Stair Tread	1.250 m			7.8 kg
E04RS0497	Stair Tread	1.065 m			5.9 kg
E04DL0289	Stair Tread	0.90 m			3.9 kg
E04DL0268	Stair Tread	1.25 m			7.6 kg

## Emergency/Public Access steel stair with a load capacity of 7.5 kN/m<sup>2</sup>

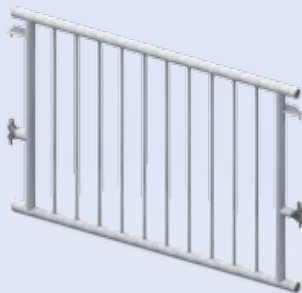
Flexible and strong steel stair configuration, using standard steel decks up to 2.07 m width as treads. The handrail for the 1.5 m rise is a “child safe” safety handrail with vertical bars. The 2 m rise stair configurations use facebraces as the hand and knee rail. Configurations built with 16 legs, with appropriate dimensions, as and when required.



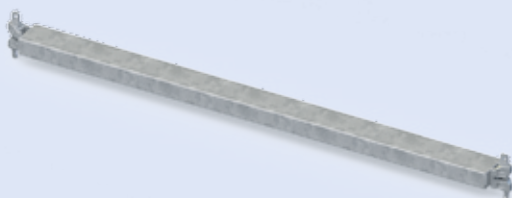
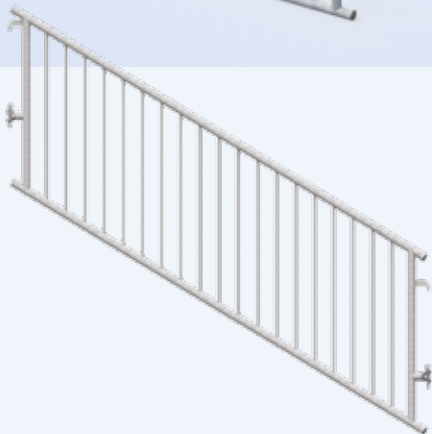




Product nr.	Description	W	L	H	Weight
E04RS0980	Stair stringer		2.57 m	1.50 m	36.5 kg
E04RS1050	Stair stringer		2.57 m	2.00 m	41.5 kg
E04RS1094	Stair stringer		3.07 m	2.00 m	45.6 kg



Product nr.	Description	W	L	H	Weight
E04RS0985	Safety Guard rail		0.73 m		13.2 kg
E04RS0954	Safety Guard rail		1.09 m		17.9 kg
E04RS0986	Safety Guard rail		1.40 m		22.3 kg
E04RS0987	Safety Guard rail		1.57 m		24.2 kg
E04RS0988	Safety Guard rail		2.07 m		31.4 kg
E04RS0989	Safety Guard rail Stair		2.57 m	1.50 m	44.0 kg



Product nr.	Description	W	L	H	Weight
E04RS0981	Gap fill Ledger		0.73 m		5.1 kg
E04RS0953	Gap fill Ledger		1.09 m		7.4 kg
E04RS0982	Gap fill Ledger		1.40 m		9.5 kg
E04RS0983	Gap fill Ledger		1.57 m		10.4 kg
E04RS0984	Gap fill Ledger		2.07 m		13.4 kg



